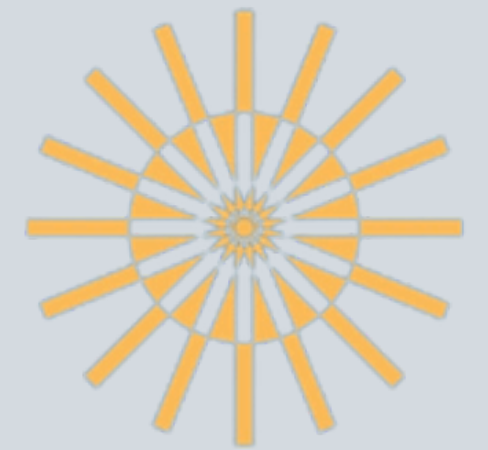


LumaSafe



LUMA
SAFE



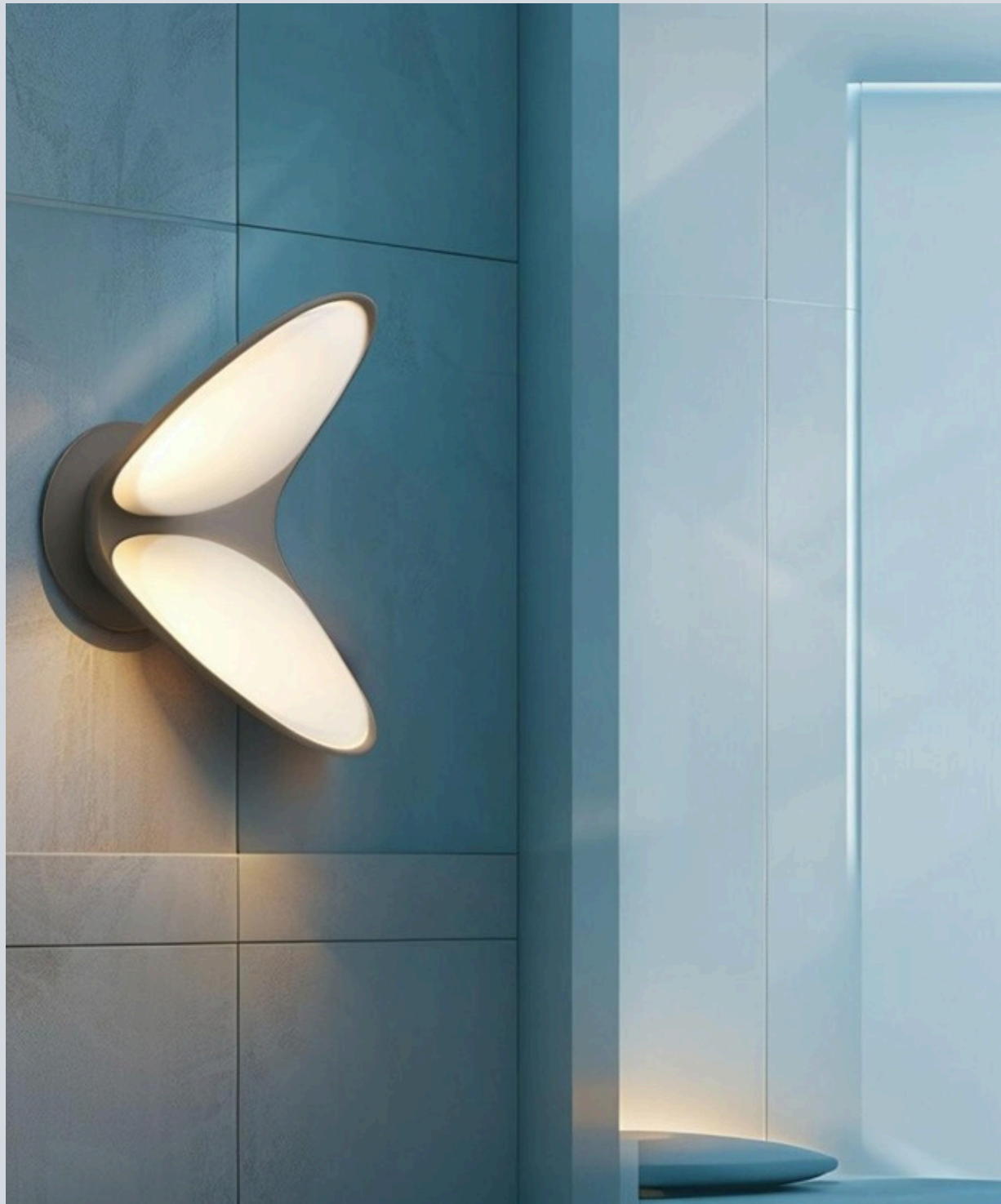
LumaSafe

Light That Understands Its Environment

Buildings were never designed to think.

LumaSafe brings awareness to the daily lighting and transforms the mundane environment into something that reacts to the surroundings. Safety, insight, and control start at the wall, without interruption, rewiring, or complex setup.





Product Overview

Smart Portable Lighting Designed for Real Spaces

LumaSafe is a smart portable light that measures the environmental conditions and even carries out the daily illumination. The units are all networked wirelessly, creating a distributed network that monitors, analyses, and notifies. The system is simple to install and can be custom-fit to the buildings that have never been designed to be smart.

Lighting is more than the brightness. It becomes information.



Core Capabilities

Awareness Built Into Every Light

- Environmental Monitoring

Each light observes temperature, humidity, air quality, and potential hazards directly from the space it serves.

- Wireless Networking

Multiple lights communicate with one another, creating a shared view of the environment across rooms and floors.

- Portable Installation

Lights attach to walls without fixed wiring and recharge through concealed panels, allowing repositioning whenever needed.

- Real Time Alerts

Detected risks such as fire indicators or gas presence trigger notifications, helping occupants react sooner.



Key Features

Designed to Work Quietly in the Background

- Modular Sensor Design

Sensors adapt based on the needs of each space, allowing the same light to serve different roles.

- Hidden Charging System

Energy flows through concealed wall panels, keeping walls clean and installations simple.

- Smart Connectivity

Wireless communication enables remote monitoring and control through connected devices.

- Local Intelligence

Each unit processes data close to the source, supporting faster response and reliable operation.



Product Details

The LumaSafe System

- LumaSafe Platform

A unified environment where lighting status, environmental data, and alerts come together in one view.

- Accessibility

Information remains available on mobile devices and desktops, whether on-site or away.



- Technology Foundation

Smart lighting hardware, environmental sensors, wireless communication, and intelligent processing work as one system.



Applications

Built for Everyday Buildings

- Residential Spaces

Homes gain added warnings without renovation, supporting safer daily living.

- Multi-Unit Properties

Shared buildings benefit from distributed monitoring across multiple units and common areas.

- Commercial Environments

Workspaces receive lighting that contributes to safety awareness and operational insight.



Target Markets

Who LumaSafe Is Designed For

- Homeowners

People are seeking safer living environments without altering existing structures.

- Property Managers

Teams responsible for multiple units that require visibility into building conditions.

- Developers and Renovators

Projects that upgrade existing buildings while avoiding structural changes.





Why LumaSafe

More Than Illumination

- **Simpler Installation**

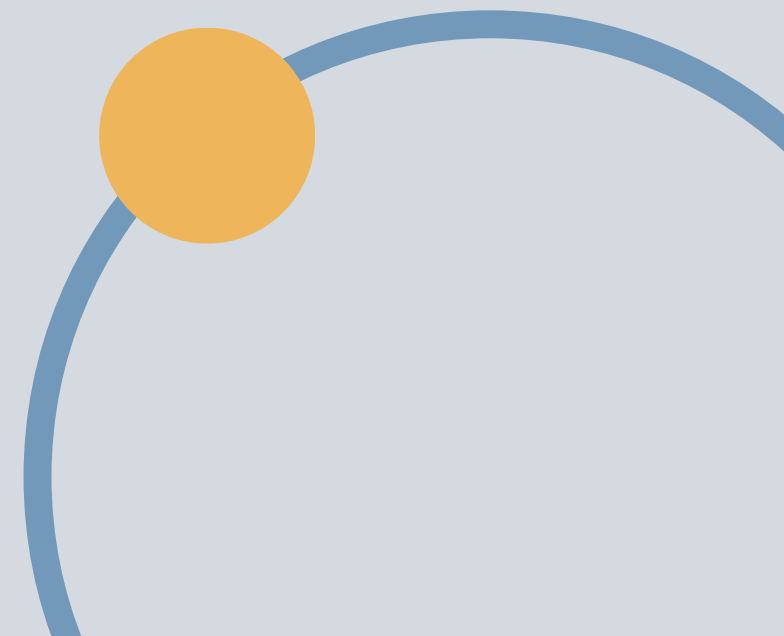
Traditional upgrades demand time and disruption. LumaSafe installs quickly and adapts easily.

- **Lower Barriers**

Existing buildings gain smart capabilities without invasive work.

- **Added Awareness**

Lighting now participates in protecting people and property.



Contact Us

Start Building Safer Spaces



Website: www.lumasafe.com

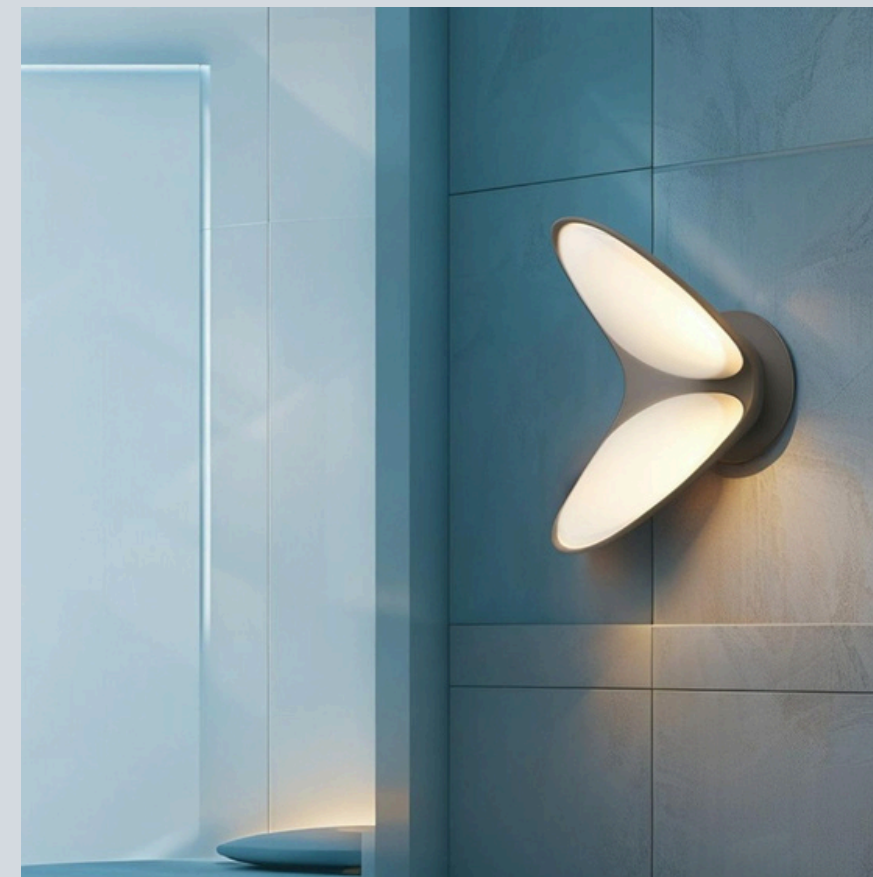
Email: info@lumasafe.com

LinkedIn: LumaSafe on LinkedIn

Call to Action

Bring Awareness to Your Walls

Discover how LumaSafe introduces environmental insight into everyday lighting. Reach out to learn more or explore the system in action.





Thank You

